

LET US HELP YOU REACH YOUR GOAL



Performance

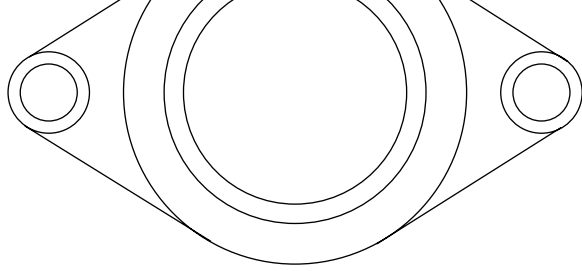
SOLUTIONS...

...FOR DEMANDING TASKS.

- Air-gap insulated exhaust manifolds
- Exhaust manifold-cat-modules
- Pipe elbow units for high-performance engines
- Inconel exhaust manifold systems (Formula 1 and GT)
- Exhaust systems
- Dry sump tanks
- Cooling water receptacles
- Oil- and waterpipes
- Complete sheet-metal components 2D&3D
- Tools and devices
- CAD-Design capability

At the beginning of the path leading to success there is the definition of the desired goal.

And only the complete identification of all partners with the joint goal and the full concentration of their combined strength focused on achieving that goal will eventually bring forth the decisive tenth per cent which tips the scale in favour of success or defeat, profit or loss. The higher the operating standards are, the more this principle applies.



We develop and produce peripheral motor components for the leading automobile manufacturers.

Our exhaust systems are being used with great success all over the world i.e. in Formula 1. High performance automobiles are equipped with our systems.

Our customers have been placing their trust in us for years.



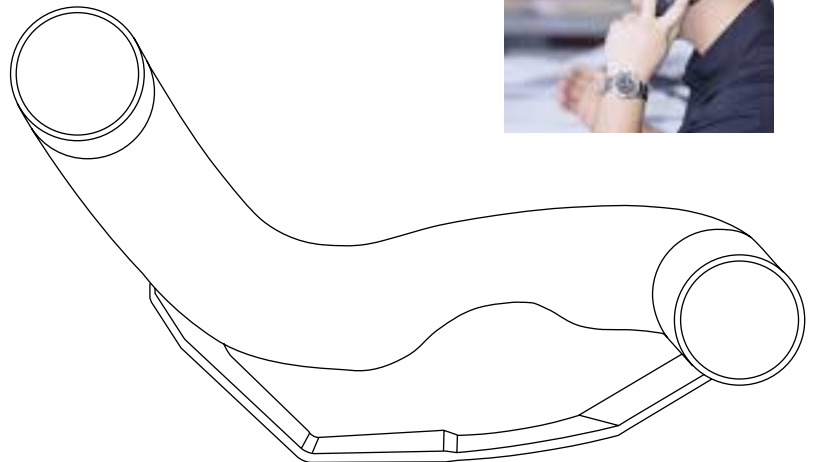
Project Management

Planning

Design

Plan

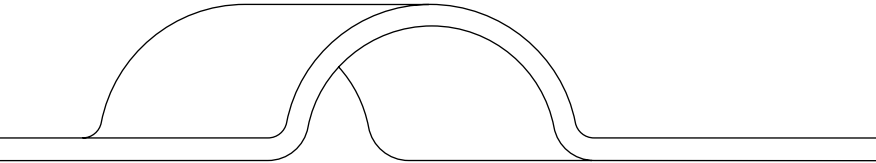
CAD



Metal Forming



Press



During production of our high-quality work pieces, the whole process of development is subject to particular dynamics.

Each stage of the procedure – from planning until the final assembly – requires the highest skilled craftsmanship and total effort from our employees.

Our modern, state-of-the-art machinery guarantees production.

Bend



STEP BY STEP...

...FOR PROTOTYPES AND SERIAL PRODUCTS.

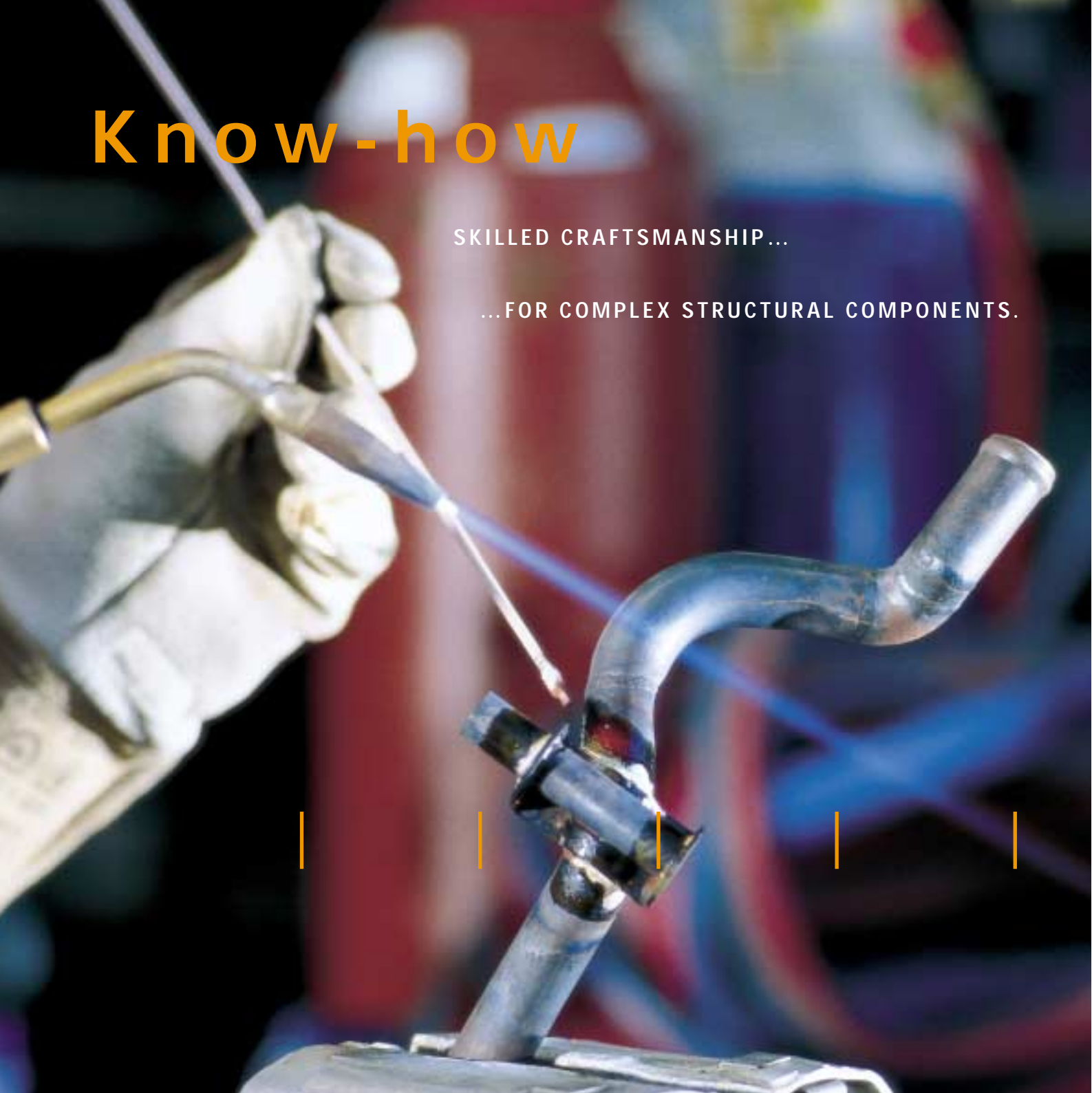
Dynamics



Know-how

SKILLED CRAFTSMANSHIP...

...FOR COMPLEX STRUCTURAL COMPONENTS.



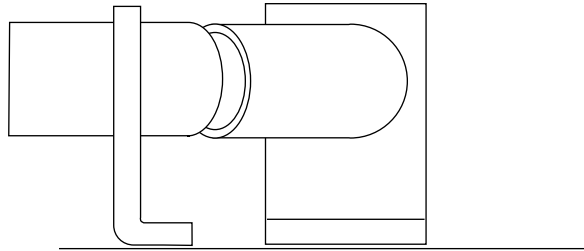


Laser cutting



Modern construction of jigs and fixtures

Frequently, the orders we get allow us to seek individual, highly specialized solutions – at times even singular solutions – for the building of prototypes. That demands free and innovative thinking. CAD stands in the very heart of the planning and realization progress. Using this medium intensively and virtually, we plan and build all work pieces and devices. In assembly, among other things, we have our own tool manufacture and laser cutter systems for the construction of jigs and fixtures at our disposal.



Marking

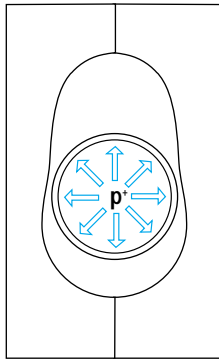


Aligning



Grinding





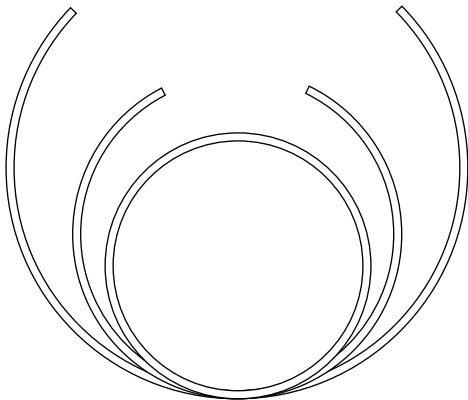
Just like many single players do not make a team by a long stretch, vital requirements for the smooth cooperation of planning, design and assembly are exactly defined processes. That is the only way to realize highly complex procedures and to put the existing know-how to maximum use.

In our company, this know-how stands on a widely encompassing foundation. For example, we also master the technique of hydroforming. During that process, the hollow piece to be reshaped is placed in a tool and sealed with high pressure. Because of the water and the high pressure applied, the material smoothes itself to the wall of the tool. By using this procedure, very complex forms become possible.



Manufacturing of tools

Manufacturing of pipes



Hydroforms starting from 1 piece to...

Innovation

A man with a mustache and a black t-shirt is working in a workshop. He is looking through a microscope or a similar precision instrument. His right hand is on a black handle of the machine. The background shows various mechanical parts and tools. The lighting is bright, highlighting the man's concentration.

UNUSUAL SOLUTIONS...

...FOR INDIVIDUAL NEEDS.

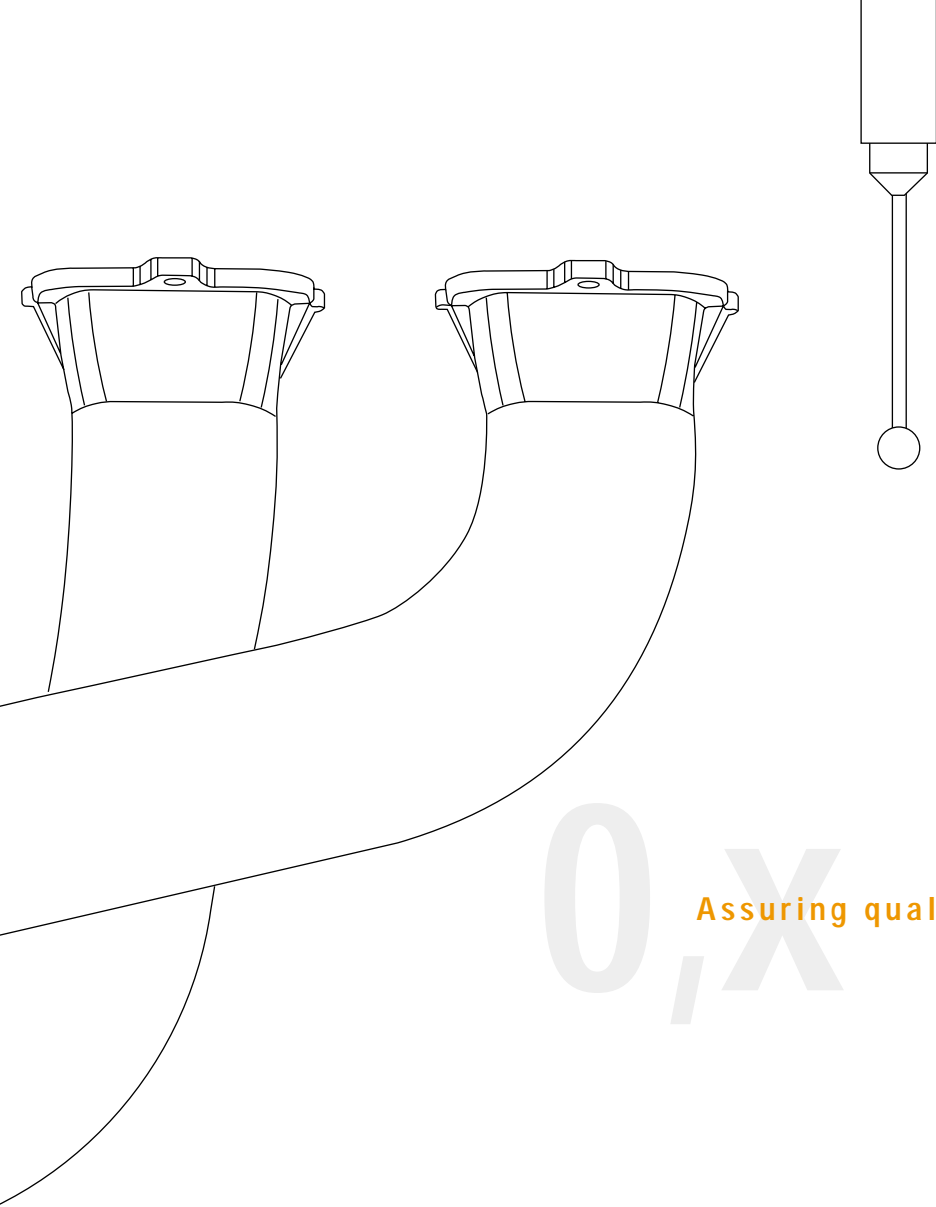
In shape(s)



THE HIGHEST QUALITY...

...FOR THE HIGHEST PERFORMANCE.





One of the foundations of success lies in the continuity of cooperation. Needless to say, we are also capable of mastering the solution for a quick and urgent order while at the same time securing the highest possible benefit for our customers.



0,X

Assuring quality

Documentation of processes

The documentation of quality management is being conducted by using the PCs in the workshop. The employee logs into the system during the first step of his work and by doing so he accepts the conditions of quality management right from the start of his work process.

After completion of the work step, the PIN-Code is entered, thereby confirming the strict compliance with the process parameters and the conditions of quality management. Because we use an identifier-system, each delivered part can be traced back – thereby securing the history of its production as well.





03.2003



MHG Fahrzeugtechnik GmbH

In den Bachwiesen 12

D-73540 Heubach

Phone (0049) 7173 927 33-0

Fax (0049) 7173 927 33-20

Info@mhg-fahrzeugtechnik.de

www.mhg-fahrzeugtechnik.de

